

2

Configurator User manuals Software Video Feedback

→ Device select → → → → → [Reset form](#)

What device do you want to set up?

- ☐ Express GSM 1 (motion detector)
- ☐ Express GSM 2 (motion detector)
- ☐ Photo Express GSM (motion detector with camera)
- ☐ Photo Express HD GSM (motion detector with Full HD camera)
- ☐ Express Power (smart power switch with security sensors)
- ☐ Polus GSM (magnetic security door/window sensor)
- ☐ Polus Aqua (water level detector)
- ☒ Polus Thermo (temperature range detector)
- ☐ Polus RSS (relay sensor switch)
- ☐ Dip GSM (smoke sensor detector)
- ☐ Button GSM (panic button)

< Back Next >

3

Configurator User manuals Software Video Feedback

→ → Action select → → → → → [Reset form](#)

What do you want to do?

- ☒ Set up device
- ☐ Change some device settings
- ☐ Remove alarm number

< Back Next >

4

Configurator User manuals Software Video Feedback

→ → → Sim-card → → → [Reset form](#)

1. Insert a Sim-card into device. Make sure that you have credit on your Sim-card and cancel PIN-code request when you turn it on.

2. Enter the Sim-card phone number.

 ▼ +1

< Back Next >

5

Configurator User manuals Software Video Feedback


→ → → → Numbers for alarm warning → → → [Reset form](#)


Enter a phone number for alarm warning. Primary number is necessary.

Primary

 ▼ +1 *

Additional

 ▼ +1

 ▼ +1

More numbers

< Back Next >

6

Configurator User manuals Software Video Feedback

→ → → → → Additional settings → [Reset form](#)

Additional settings to use.

Temperature range for internal thermo sensor

-10 40 °C °F

Temperature range for external thermo sensor

-10 40

☐ Default settings
☐ Manual settings

< Back Next >

7

Configurator User manuals Software Video Feedback

→ → → → → Settings delivery [Reset form](#)

Follow the steps to complete settings.

1. Enter checking code: hkj7i

2. Switch device to programming mode. Insert a battery in device and wait for three short beeps.

Important. Make sure that led light of the device glows green, it means that device entered programming mode. After entering programming mode device waits 1 minute for the setting reception.

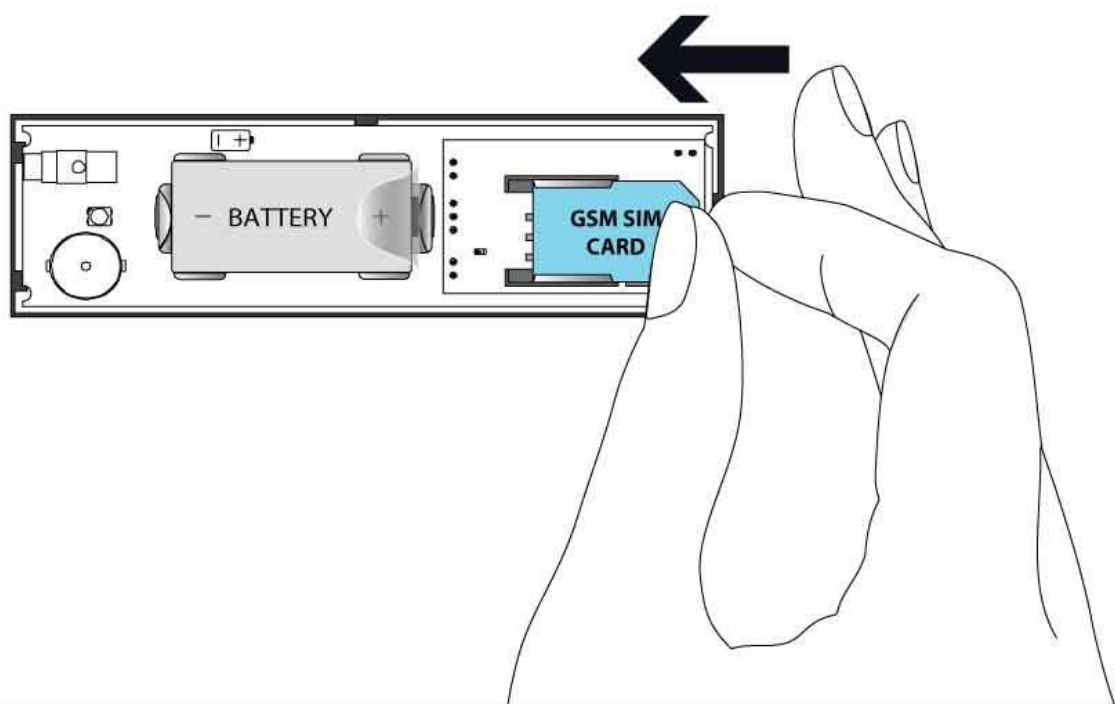
3. Send settings: >>> +13472791087

1)+13479818207,2)000,3)000,4)000,7)#225#,14)7,18)1,28)29,29)24,36)1,38)31,39)26,5)000,6)000,35)000

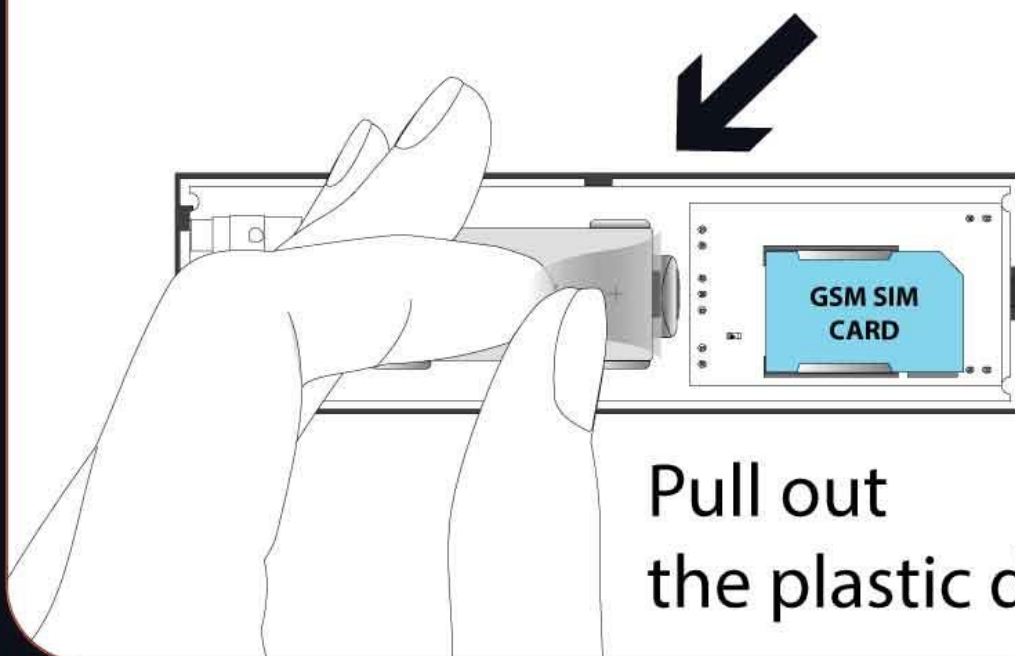
wait for sending

< Back Next >

8

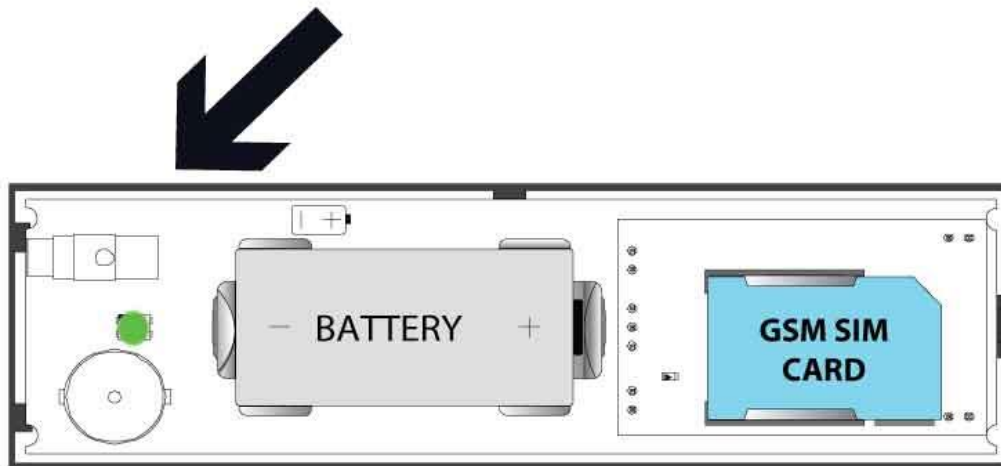


9



Pull out
the plastic divider

10



Wait until LED turns **green**
and you hear 3 short beeps

11

Configurator User manuals Software Video Feedback

→ → → → → Settings delivery [Reset form](#)

Follow the steps to complete settings.

1. Enter checking code:

2. Switch device to programming mode. Insert a battery in device and wait for three short beeps.

Important. Make sure that led light of the device glows green, it means that device entered programming mode. After entering programming mode device waits 1 minute for the setting reception.

3. Send settings: >>> +13472791087 **Press "Send" button**

1)+13479818207,2)000,3)000,4)000,7)#225#,14)7,18)1,28)29,29)24,36)1,38)31,39)26,5)000,6)000,35)000

wait for sending

< Back Next >

12

Within 3 minutes you will receive a text message,
similar to the one shown on picture below



13

Put the cover back
Polus Thermo is set

